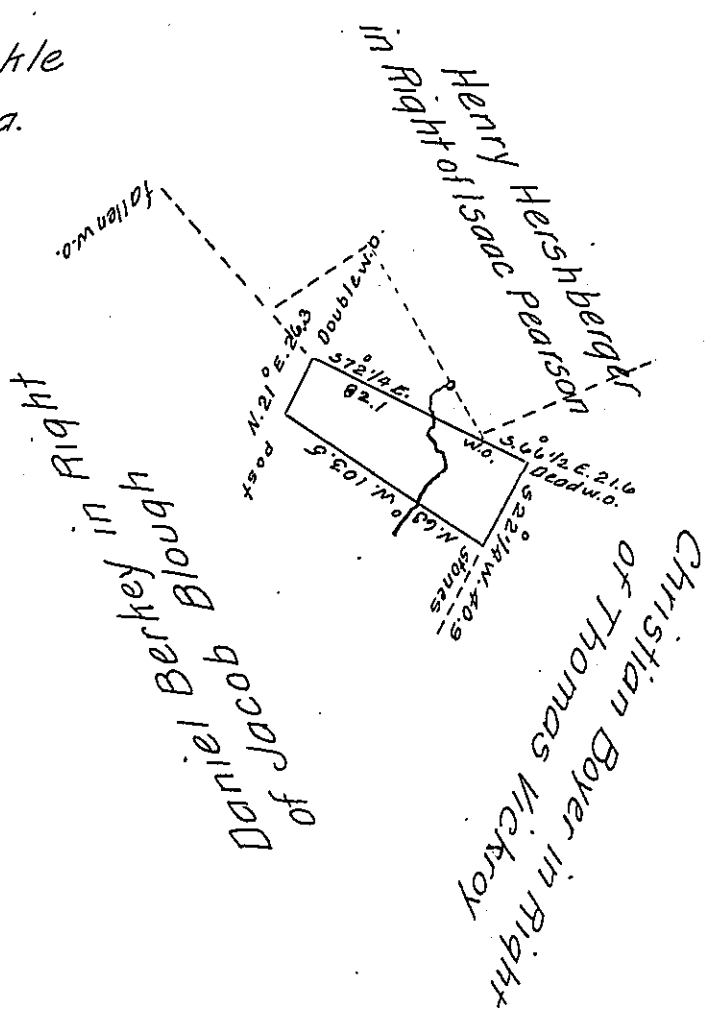


FORM NO 1.

Jonathan Grossnickle  
20<sup>as</sup>. 155<sup>ps</sup> & allowa.



Situated on the West Side of Quemahoning Creek in Jenner town-  
 ship Somerset County including his improvement. Surveyed  
 the 22<sup>nd</sup> day of December 1822 by M<sup>ss</sup>er Wells Esquire late Deputy  
 Surveyor in pursuance of a warrant dated the 25<sup>th</sup> day of November  
 1822 for 25<sup>as</sup> granted to Jonathan Grossnickle. Certified this  
 30<sup>th</sup> day of Nov<sup>r</sup> 1824.

To Gabriel Heister Esquire }  
 Surveyor General of Pennsylvania }  
 } P<sup>r</sup> Bernard Connelly J<sup>r</sup>  
 } D.S.

IN TESTIMONY that the above is a copy of the original remaining on file in  
 the Department of Internal Affairs of Pennsylvania, made  
 conformably to an Act of Assembly approved the 16th day of  
 February, 1833, I have hereunto set my Hand and caused  
 the Seal of said Department to be affixed at Harrisburg,  
 this fifth day of February 1908.

*Henry Horvath*  
 Secretary of Internal Affairs.